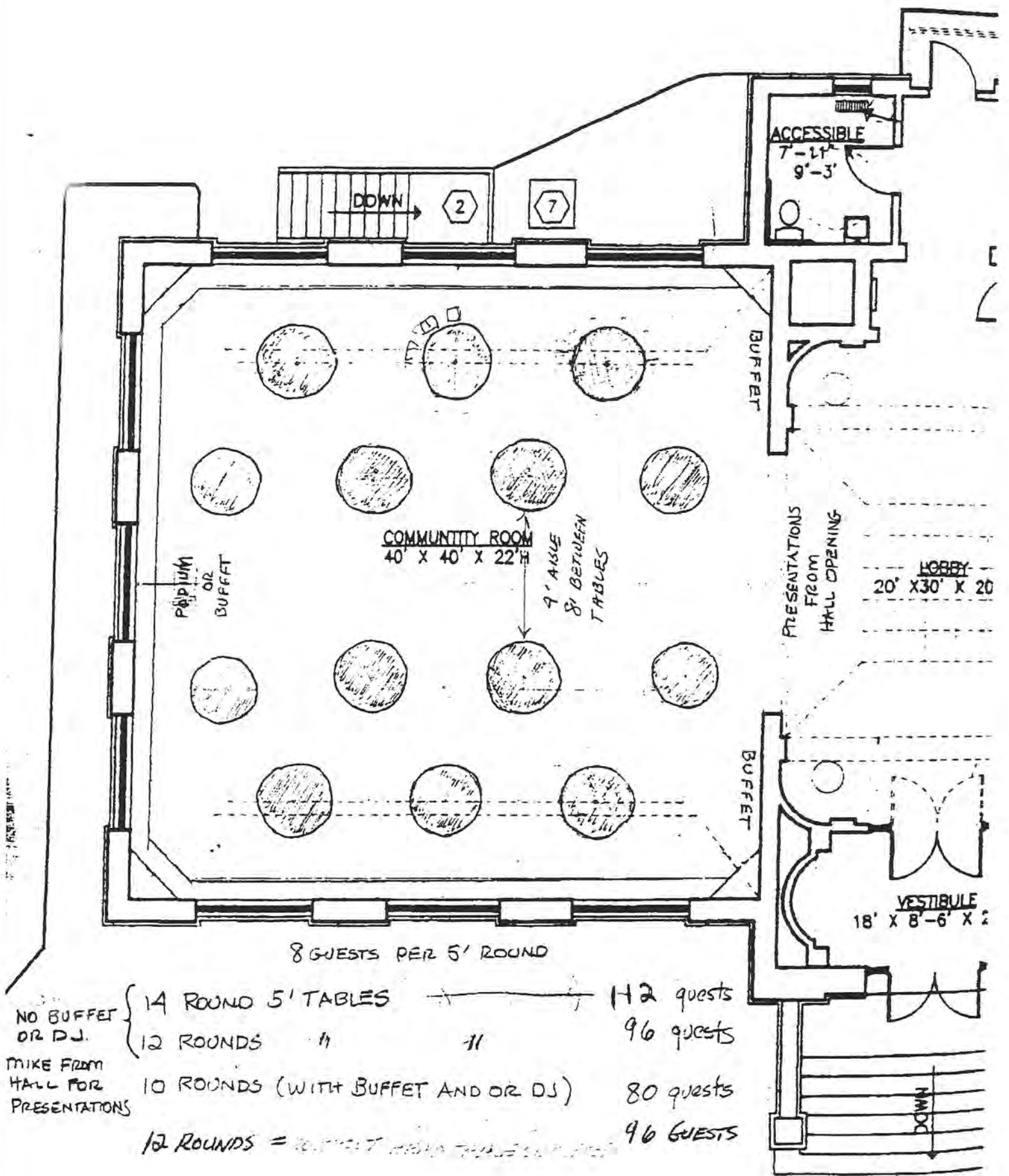
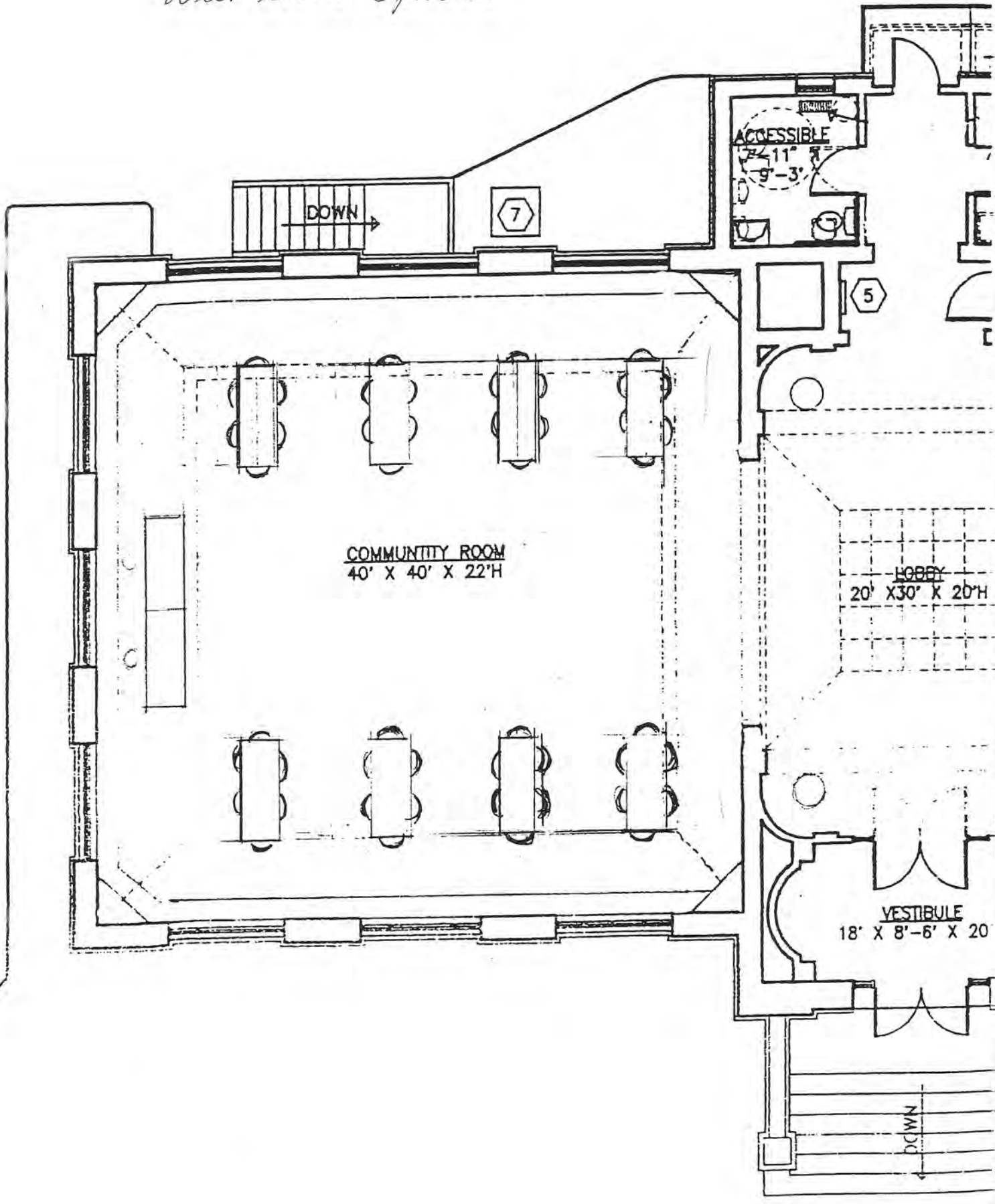


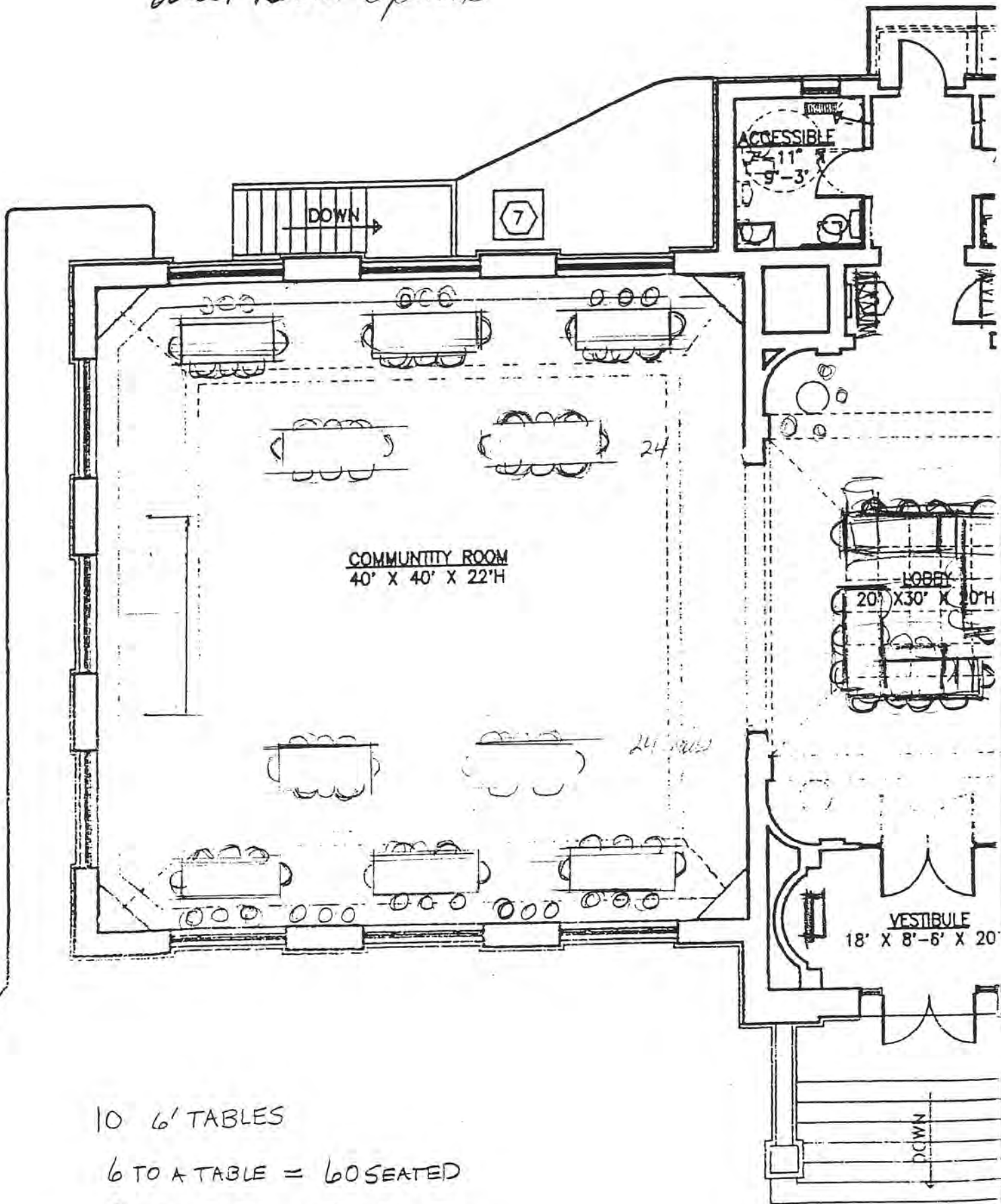
# West Room with Round Tables



West Room Options



# West Room Options



10 6' TABLES

6 TO A TABLE = 60 SEATED

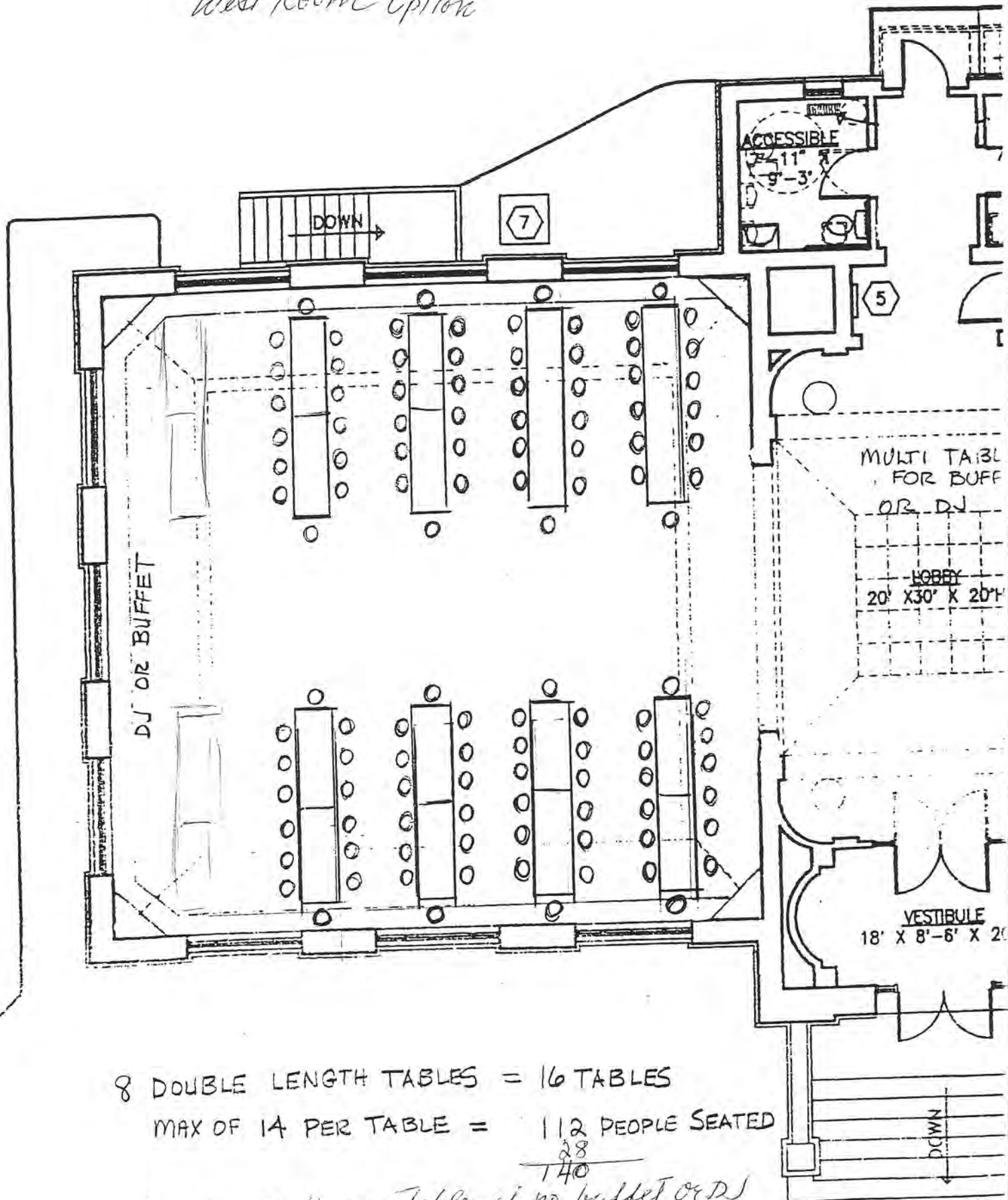
8 TO A TABLE = 80 SEATED

ADD BENCH SEATING 20 - 25 - 30 EXTRA

LOBBY SEATING

16+

West Room Options

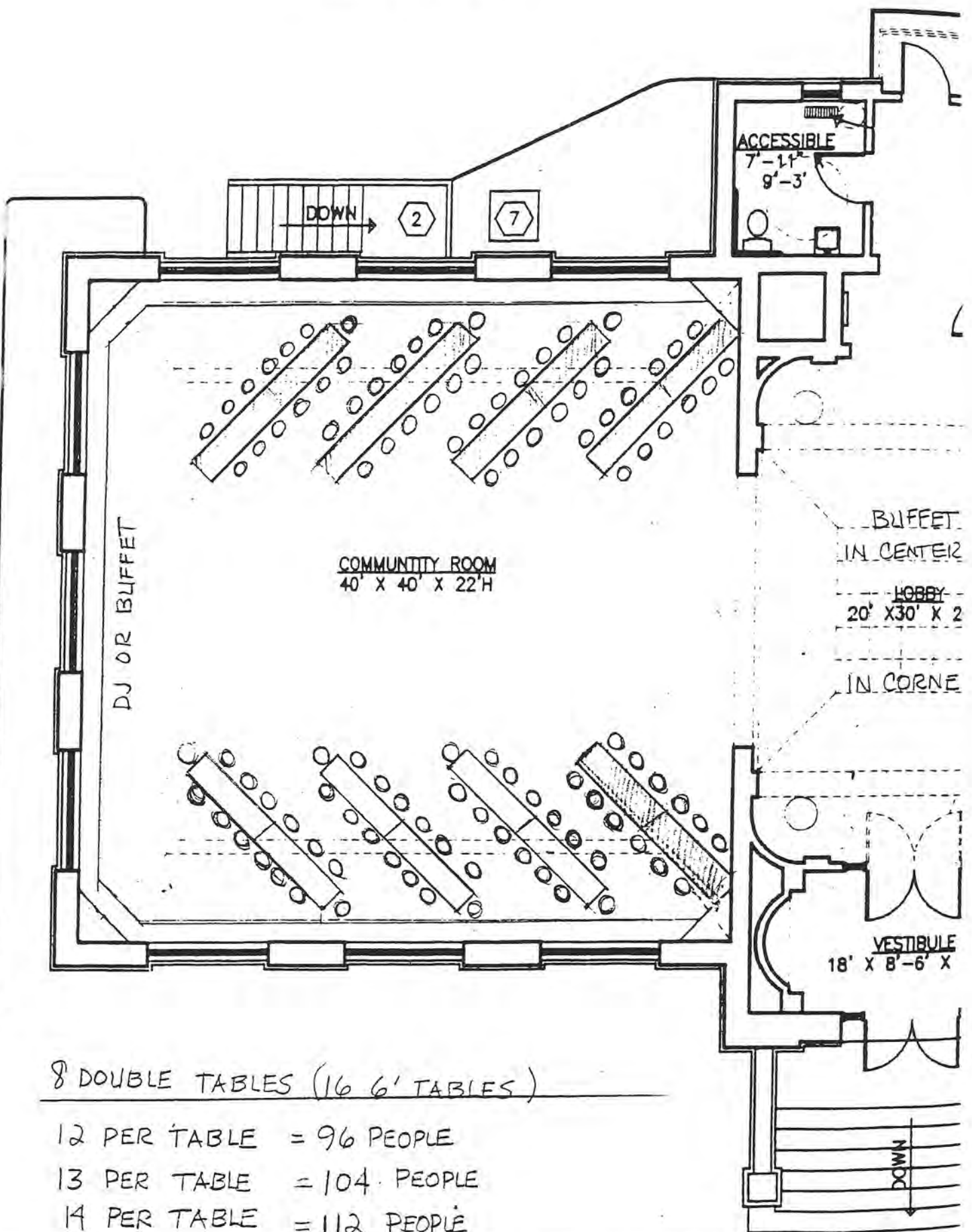


8 DOUBLE LENGTH TABLES = 16 TABLES  
 MAX OF 14 PER TABLE = 112 PEOPLE SEATED

28	
140	

could add 4 more Tables if no buffet or DJ

# West Room



8 DOUBLE TABLES (16 6' TABLES)

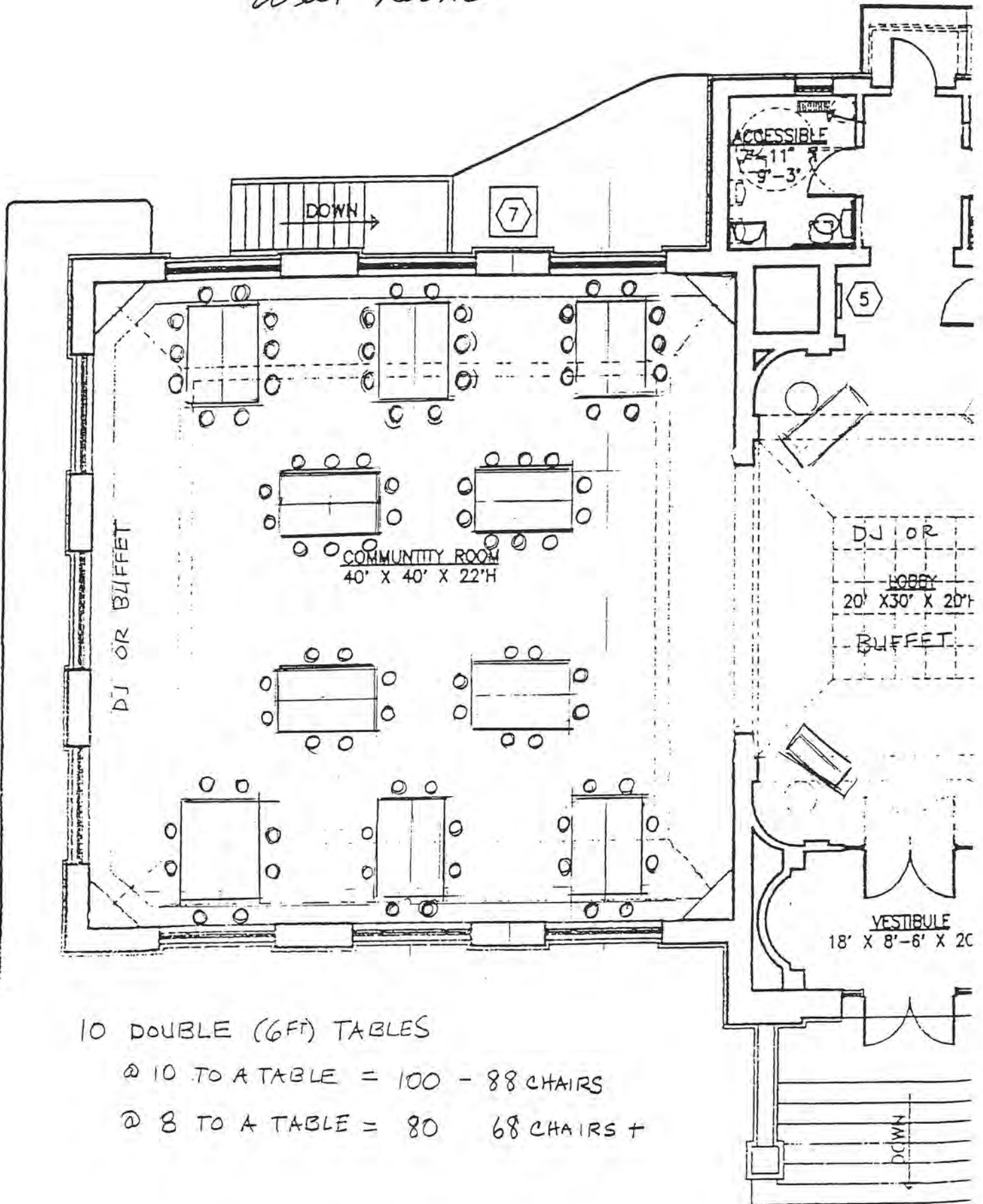
12 PER TABLE = 96 PEOPLE

13 PER TABLE = 104 PEOPLE

14 PER TABLE = 112 PEOPLE

ALL CHAIRS - NO BENCHES USED FOR TABLE SEATING

# West Room



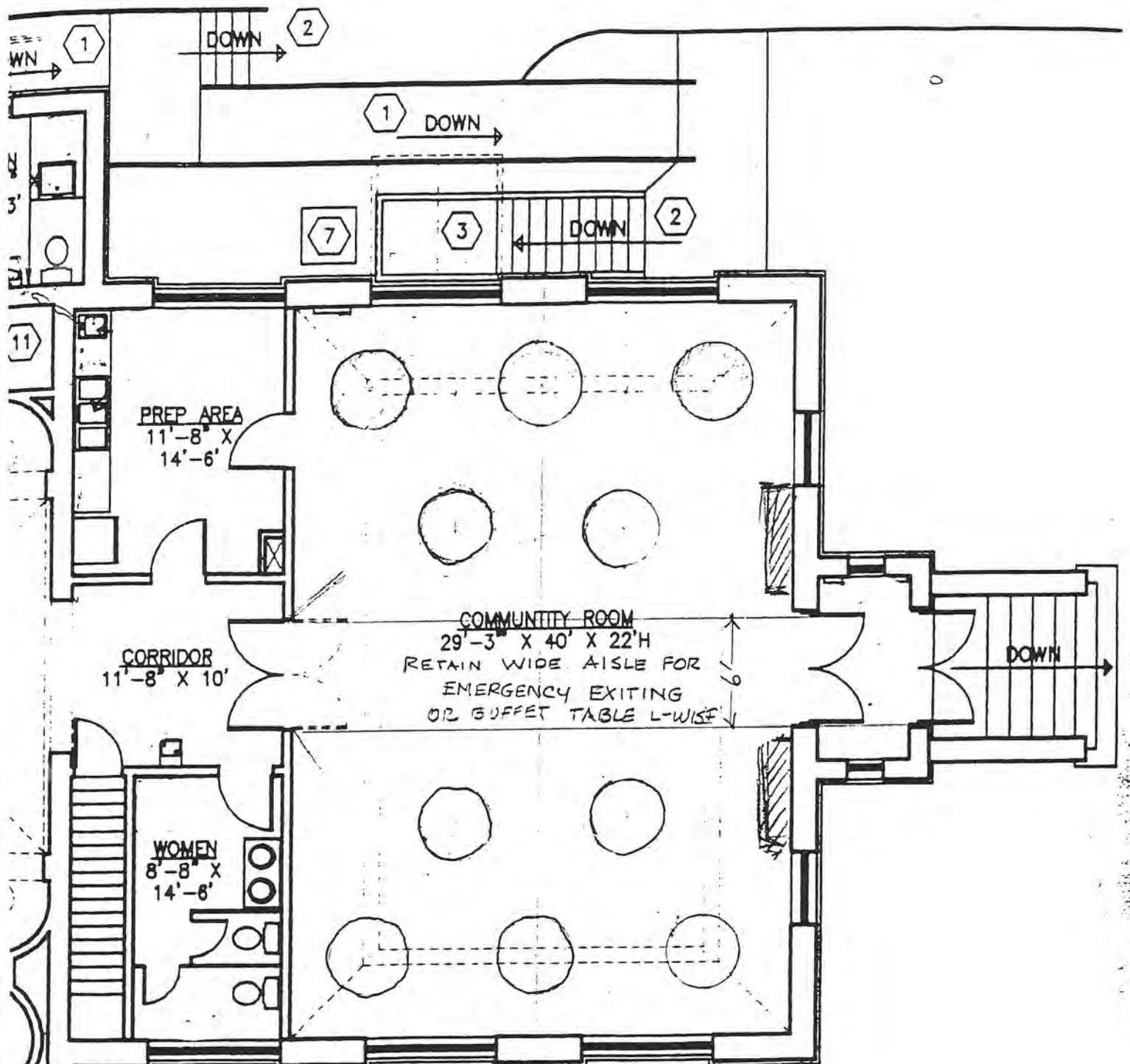
10 DOUBLE (6ft) TABLES

@ 10 TO A TABLE = 100 - 88 CHAIRS

@ 8 TO A TABLE = 80 68 CHAIRS +

OR TURN ALL TABLE HORIZONTALLY  
TO CREATE MORE SPACE IN CENTER OF ROOM

East Room Round Tables  
CARNEGIE CENTER

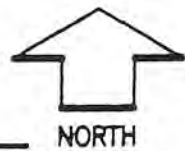


6 5' TABLES = 48 GUESTS @ 8 PER TABLE

5 5' TABLES = 40 GUESTS

FIRST FLOOR PLAN

1/8" = 1'-0"



{ 10 TABLES @ 6-7 PER GUEST = 60-61 MAX